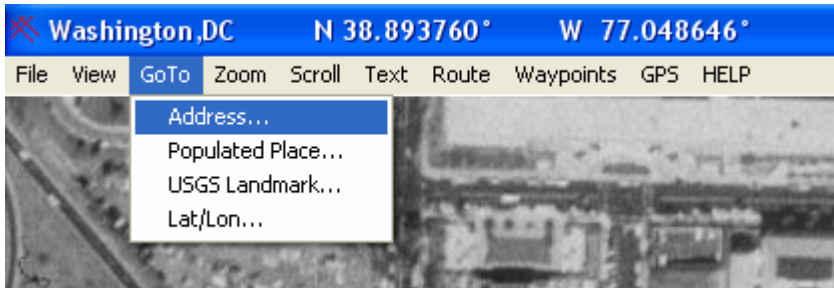


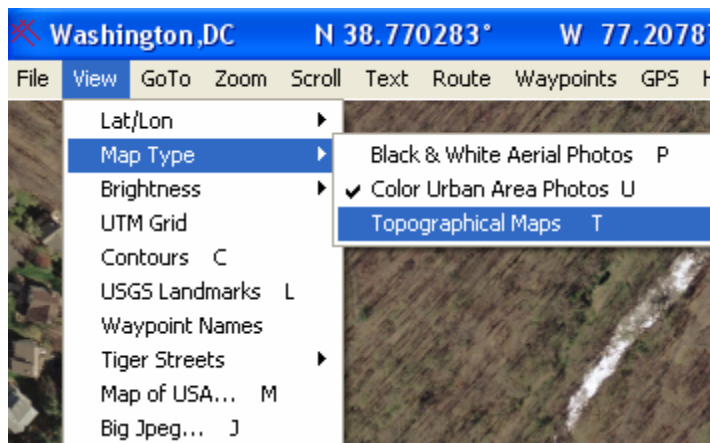
Surfing Your Community Streams

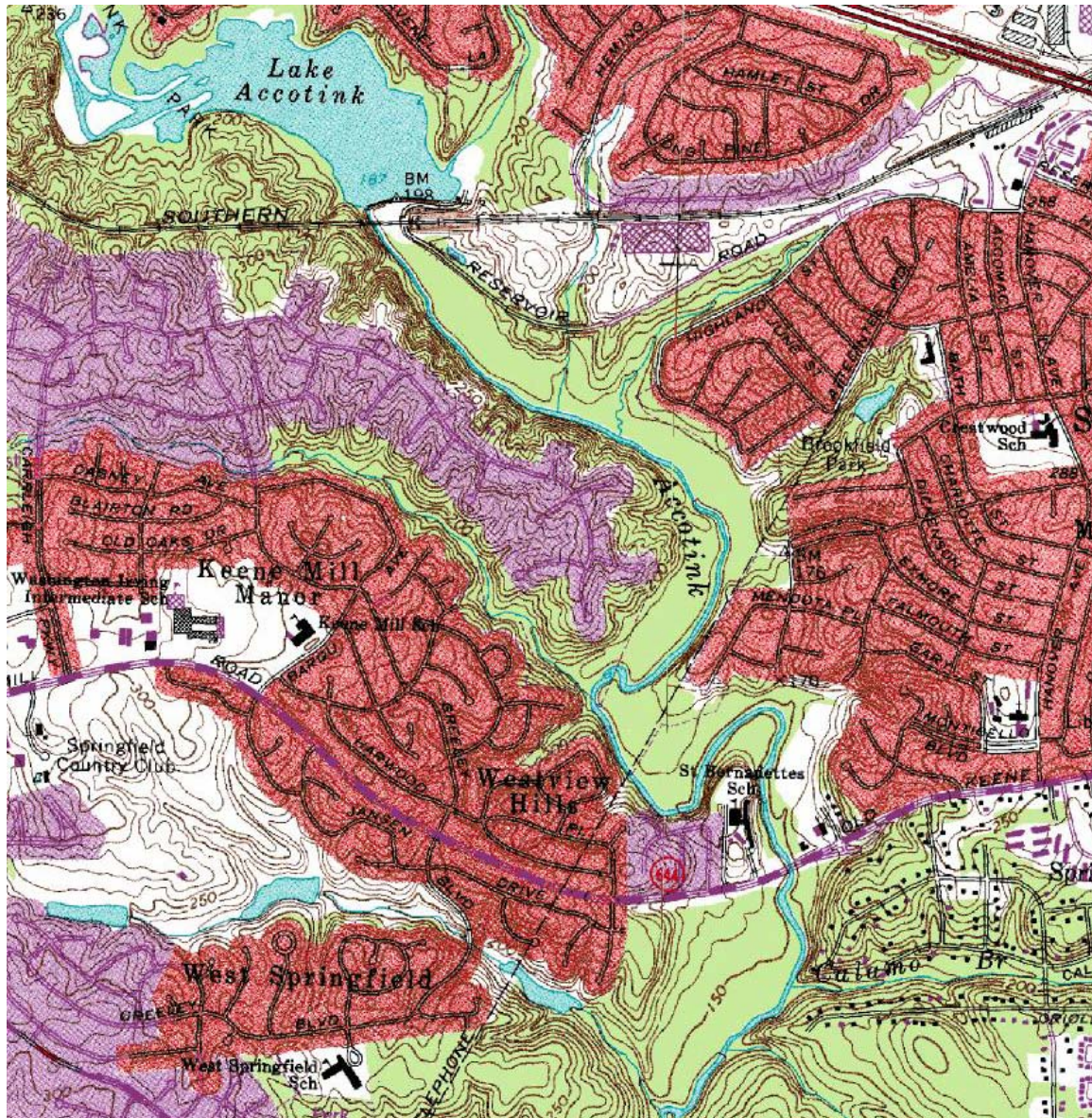
Using USA PhotoMAPS

Start USAPhotoMAPS, and navigate to your community using the <Find> tool (the address function works pretty well). Then scroll around to find a nearby stream that runs through your community.



1. Follow this stream “upstream” (note, it may help to toggle between the aerial photographs and the topomaps by going to the <VIEW> menu, and selecting <MAP_TYPE> and selecting <Topographic Maps>. Also note that the Fairfax County region does have high quality color photos (accessible through the Color Urban Area Photos option). *You will need to press the “f” button (on the keyboard) to refresh the screen after choosing a different maptype.*





- a. What localities are located upstream?
- b. What types of businesses are located upstream?
- c. What are the predominant types of land uses upstream?

- d. How do these land uses potentially impact water quality in your community?
 - e. What basic steps could the communities upstream take to improve water quality in your community?
2. Continue to follow this stream “downstream” from your community, and be sure to toggle the high resolution aerial photography “on” and “off”.
- a. What are the names of the localities that are located downstream from your community?

 - b. What types of businesses / industries can you identify downstream?

 - c. How may these businesses be impacting water quality for communities downstream?

 - d. How would you characterize most of the streams? Are there trees lining the streams to mitigate water and sediment runoff? Are the majority of the stream banks vegetated or “concrete”? What impacts could this have on water quality for communities downstream?