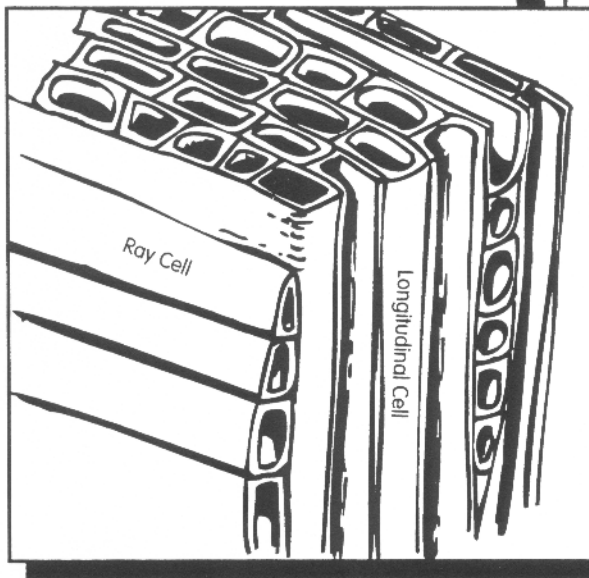
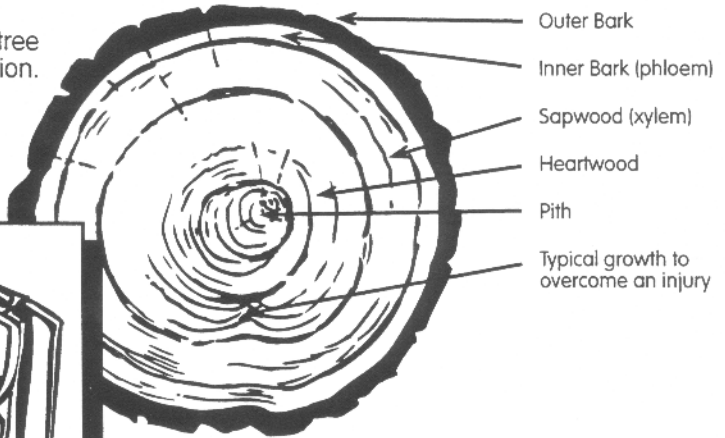


A Tree and Its Parts

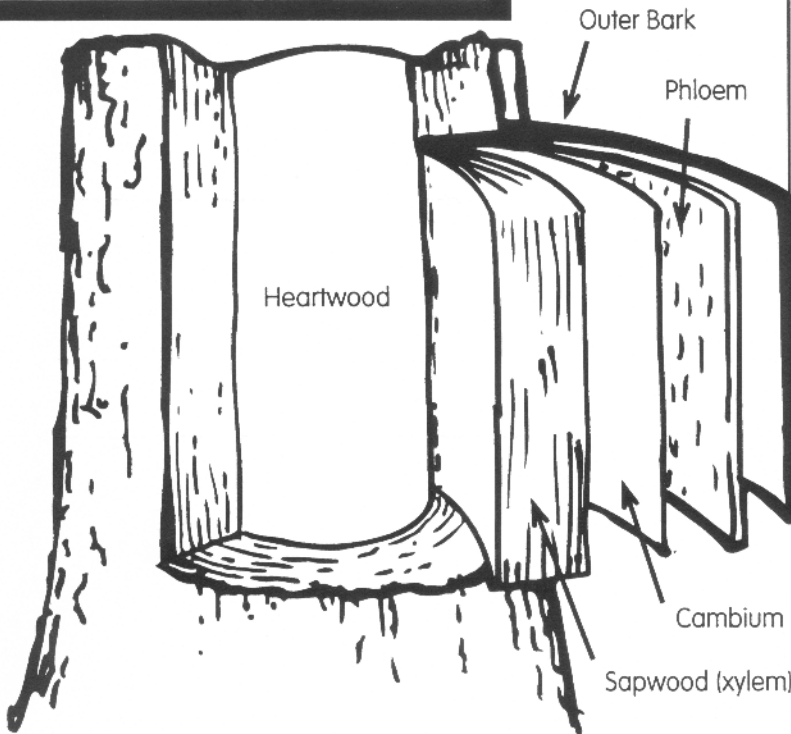
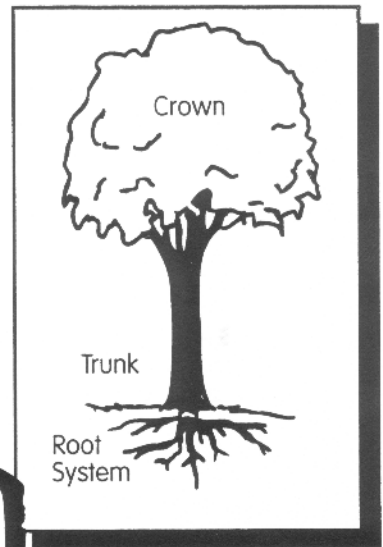


The trunk of a tree viewed in cross-section.

Note the longitudinal cells which act as pipes, transporting water, sugars and minerals up and down the tree.



Note the horizontal ray cells that move sugars from the outside of the tree to the inside.



Water and nutrients travel up a tree in the xylem. Sugars from photosynthesis travel down the tree in the phloem. The cambium is a growth layer between the xylem and phloem.